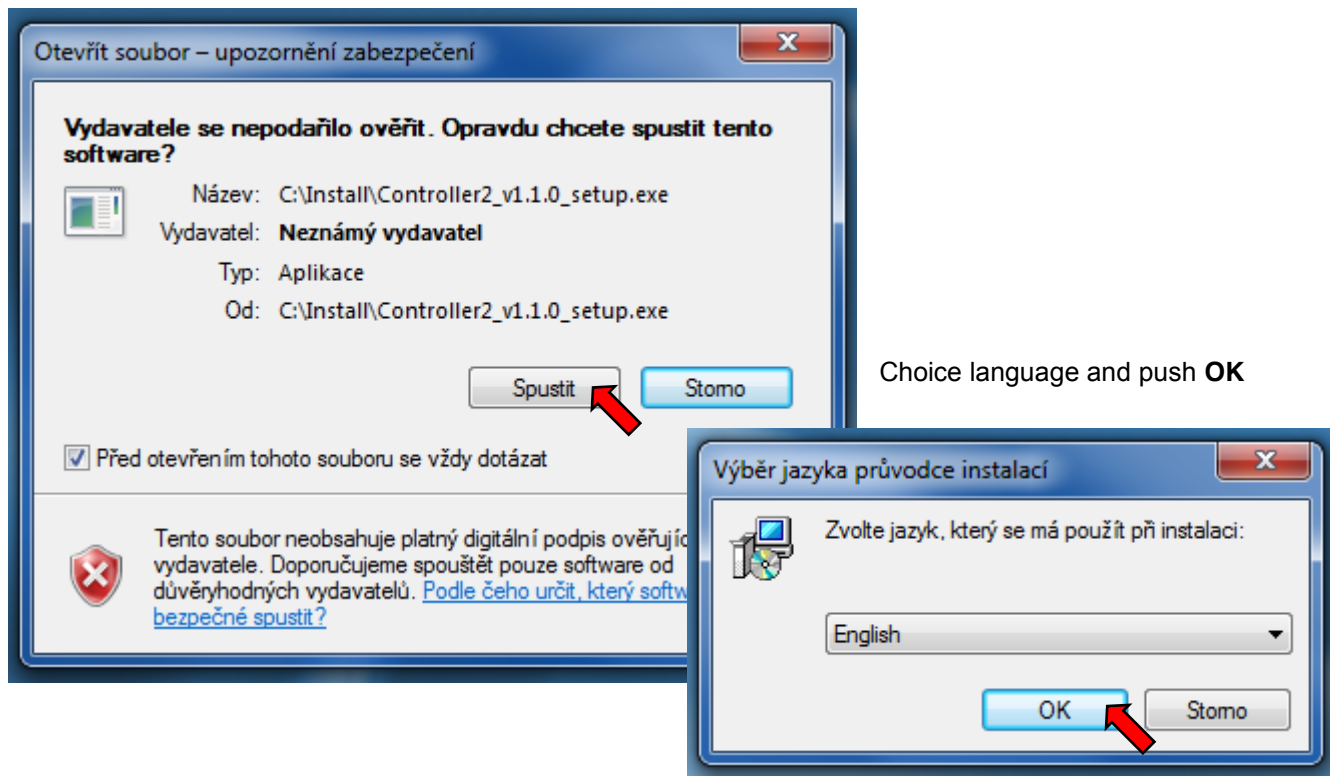
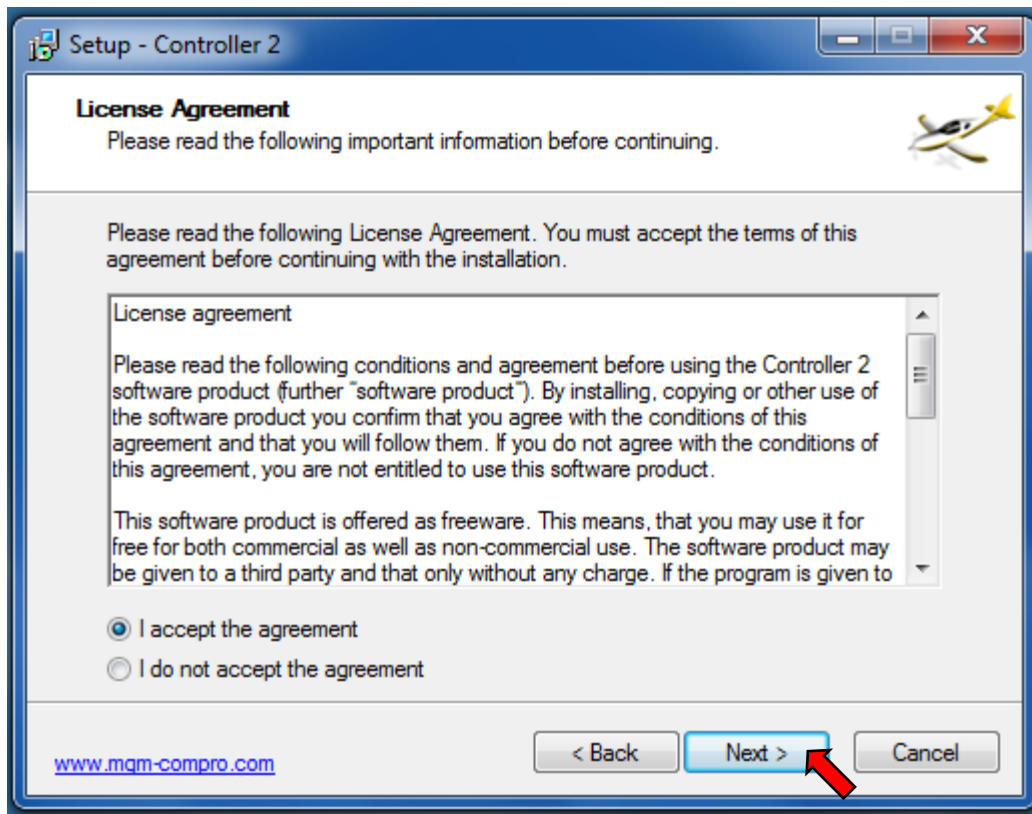


Program Controller 2 installation

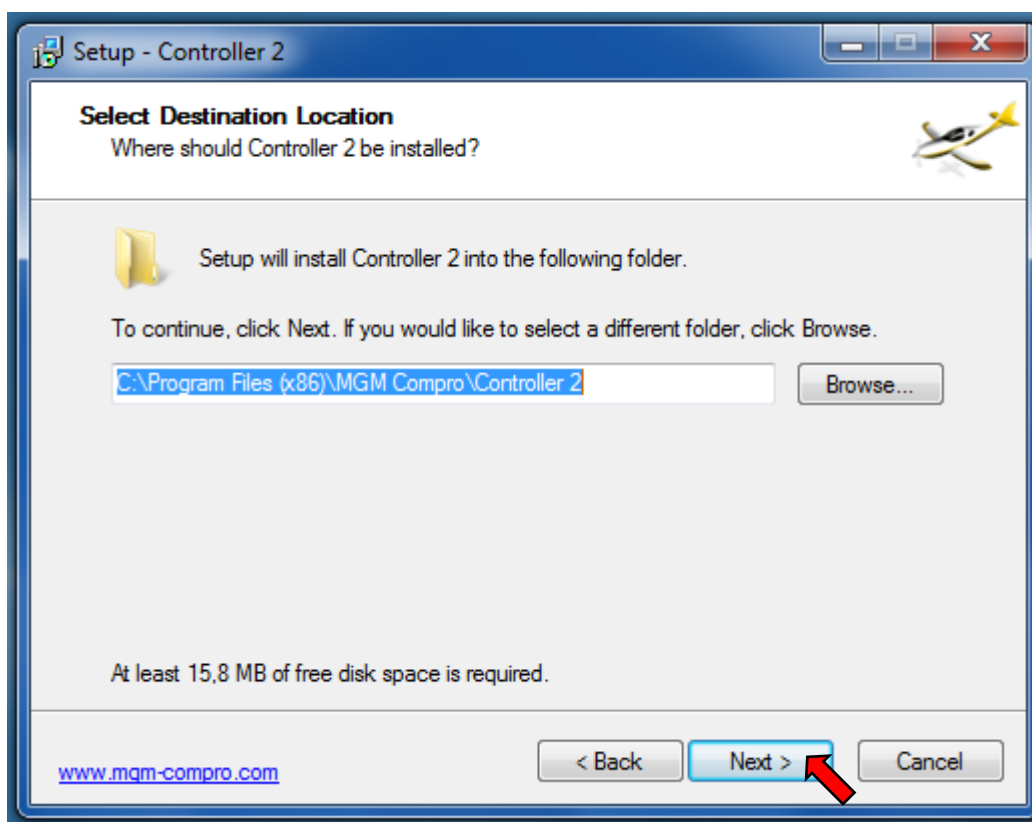
Copy program “**Controller2_v1.x.x_setup.exe**” from CD to folder Install (or other) or download newest version of this program from company web: <http://mgm-compro.cz/index.php?cat=software>

Run this program. Ignore next screen and click to **Run**

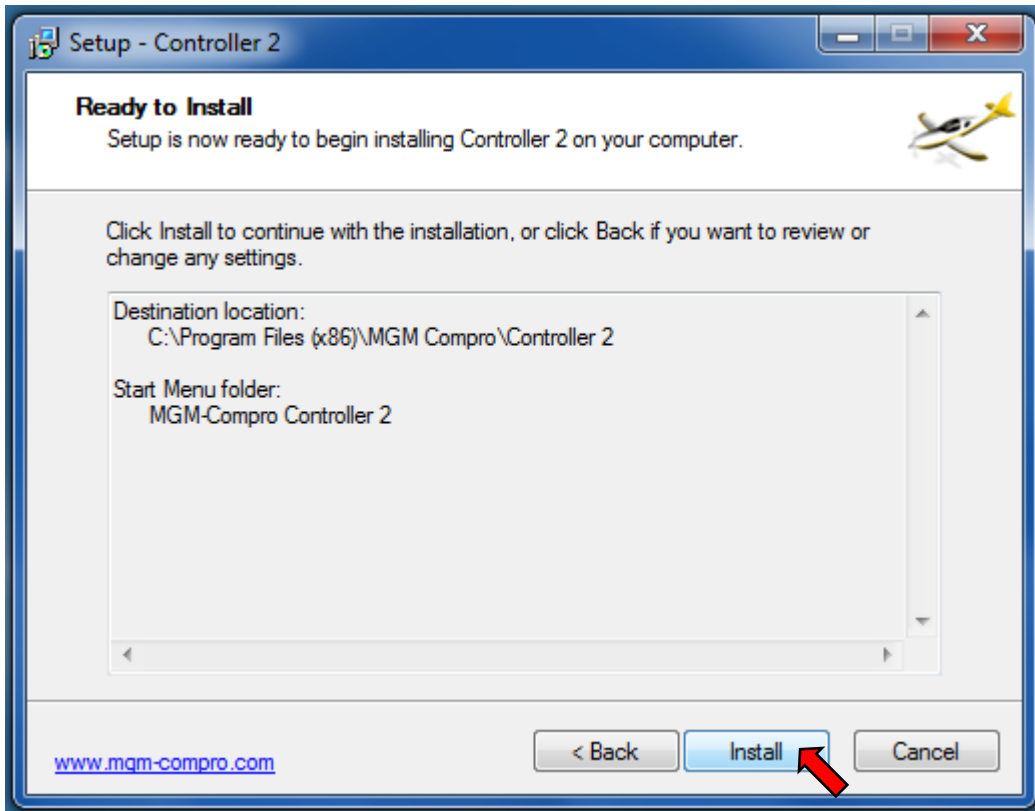




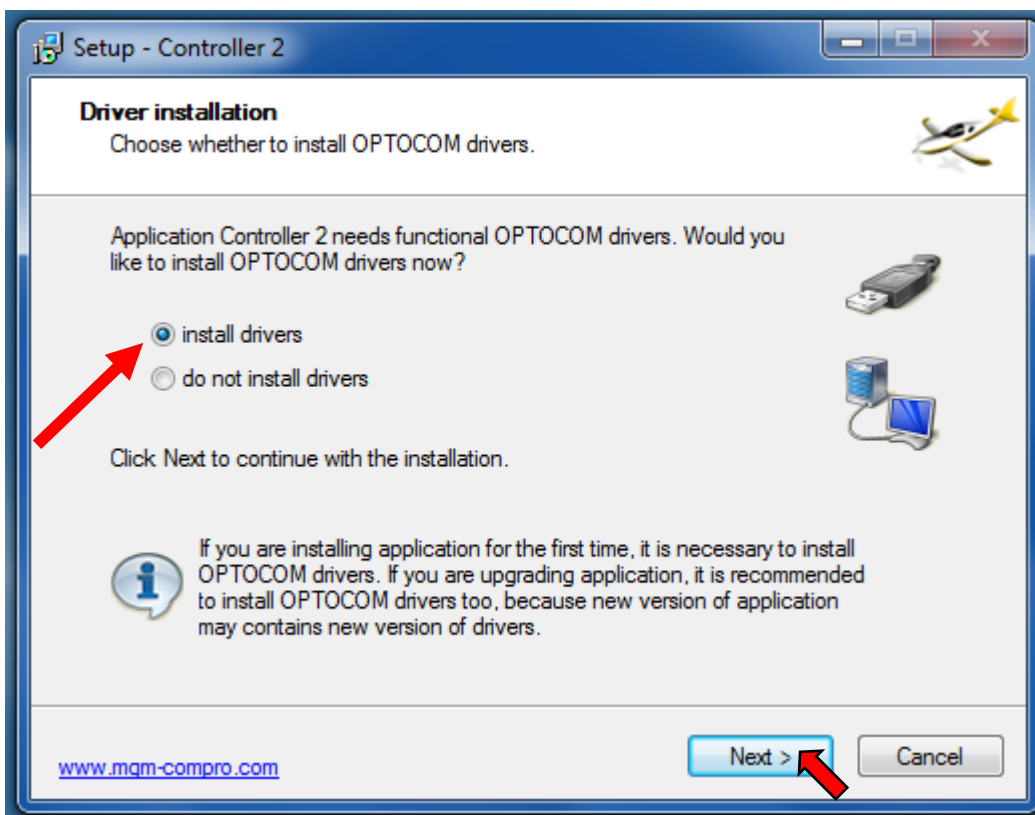
Choice **I accept** and click to **Next**



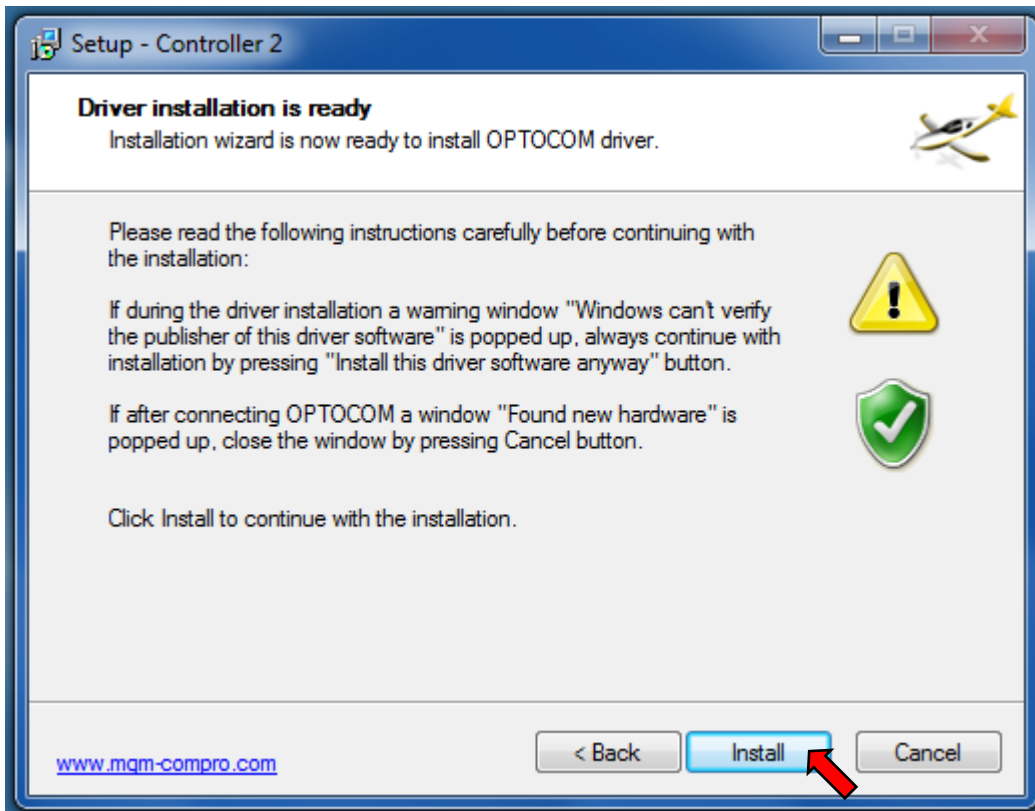
Choice folder for installing and click to **Next**



Click to **Install**

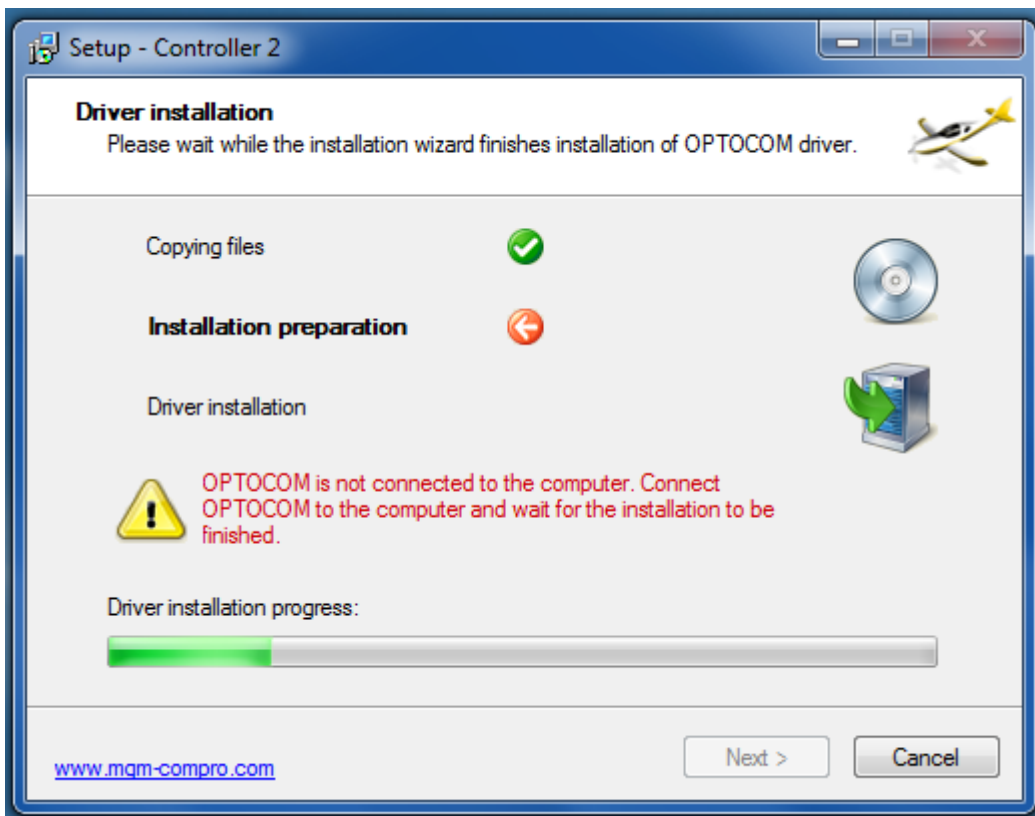


Choice "**install drivers**" and click to **Next**



Click to **Install**

If system warn that program is not certified, click to **Continue** (or Next)

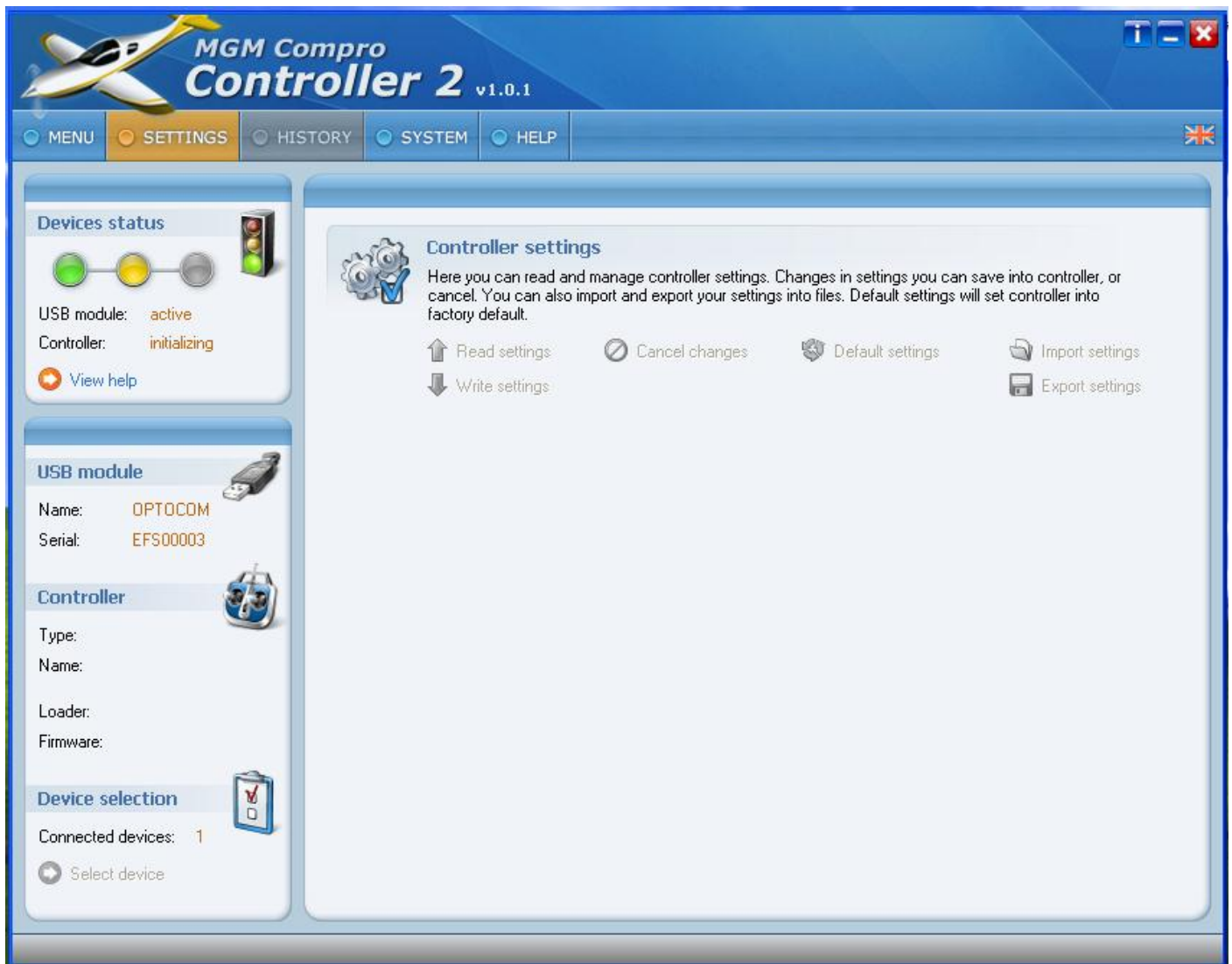


Connect **USBCOM_4** module to your PC – installation will be continue automatically



Click to "**Run Controller 2**" and push "**Finish**".
Installer generate also icon to your screen for next start this program.

Wait for this screen:



Connect your controller X-series range to USBCOM_4 (to I2C port) by CC_11 cable.

Connect to main (traction) battery and turn-on controller by switch or only connect to main battery when controller has not switch.

(switch open = controller-on)

Now you can set parameters. Follow help of this program and instructions in the controller's manual.

